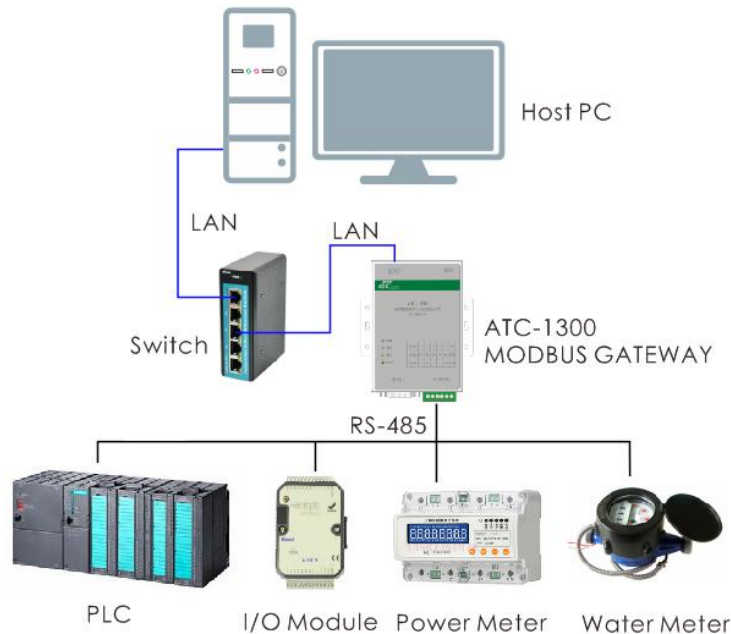


ATC-1300 Modbus Gateway Application Guide

1. Refer to the following application diagram to complete the hardware connection.



2. Make sure all cables are connected properly. Power on the ATC-1300 Modbus Gateway.

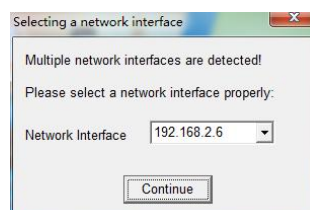
3. Since the default IP address of the ATC-1300 is 192.168.2.125. Therefore, your computer must be configured with the same network segment and no conflicting IP address in the LAN (such as 192.168.2.100).

4. Enter 192.168.2.125 in your browser. Or enter the web page through the configuration software. The following demonstrates the operation through the Configuration Utility.

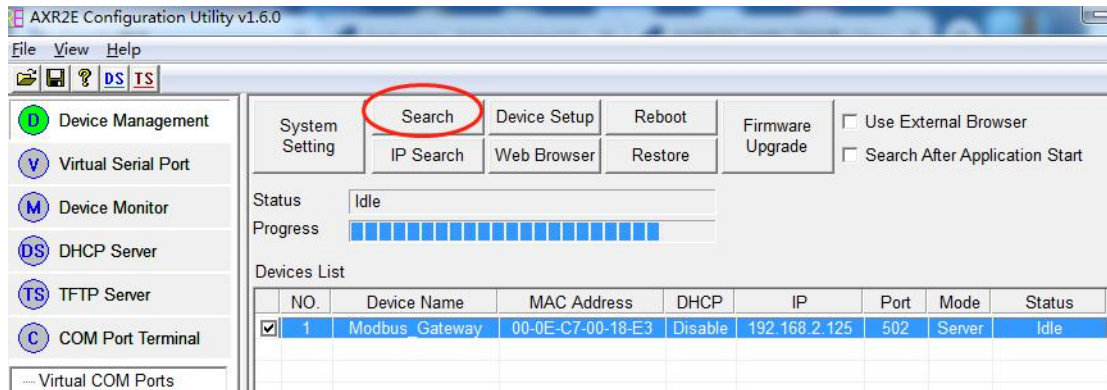
4.1 Download and install the Utility software from the ATC website.

www.szatc.com/download

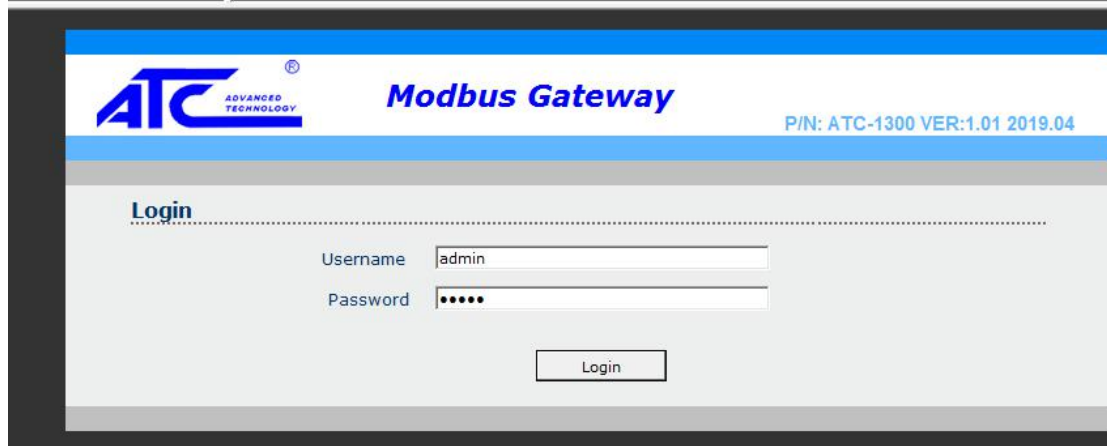
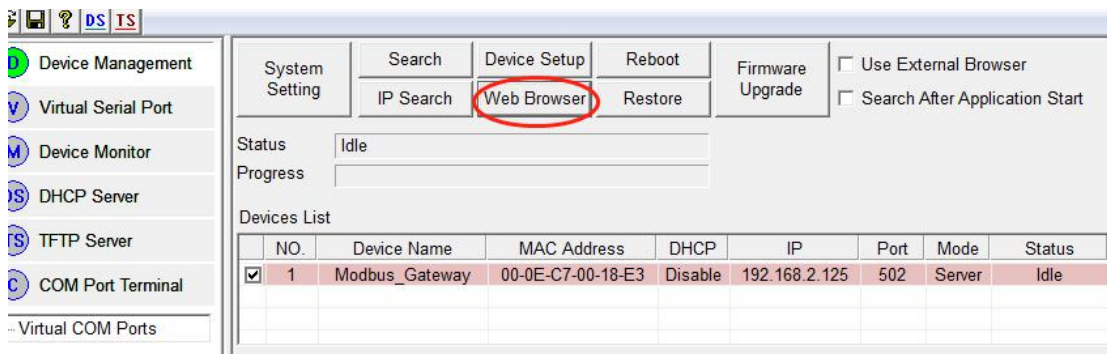
4.2 Open the AXR2E Configuration Utility software. Select IP address to enter the software interface.



4.3 Find the gateway device in the LAN by clicking the search button.



4.4 Select the gateway in the Device List and click the Web Browser button to enter the web page.



4.5 Input Default Usermane: admin ; Default Password: admin . Click Login button enter to webpage.

4.6 On the Basic option of the webpage. You can set the serial port parameters and IP address of the gateway. Usually only need to configure the serial port parameters and the IP address, port number can be used normally.

Logout

Basic
Advance
Security

Serial Settings

Device Name:

Data Baud Rate:

Data Bits:

Data Parity:

Stop Bits:

Flow Control:

Serial Type:

Network Settings

DHCP Client:

Static IP Address:

Static Subnet Mask:

Static Default Gateway:

Static DNS Server:

Connection Type:

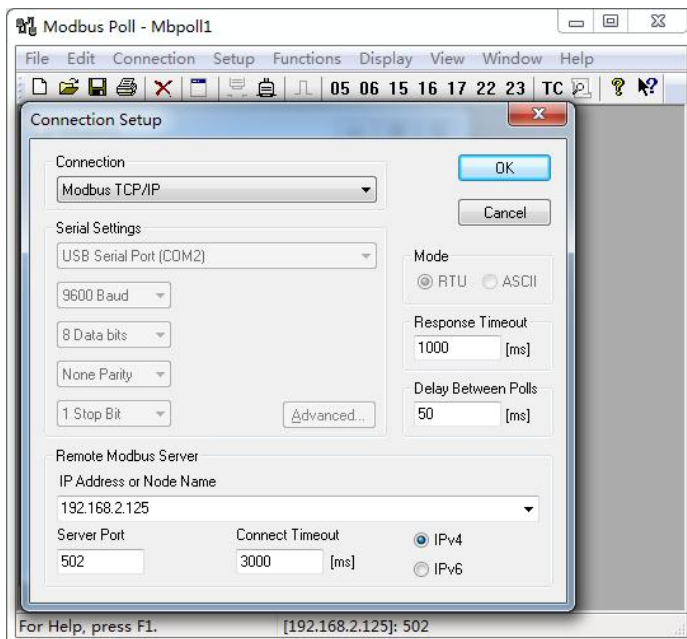
Transmit Timer:
Please enter an integer between 10~65535 ms

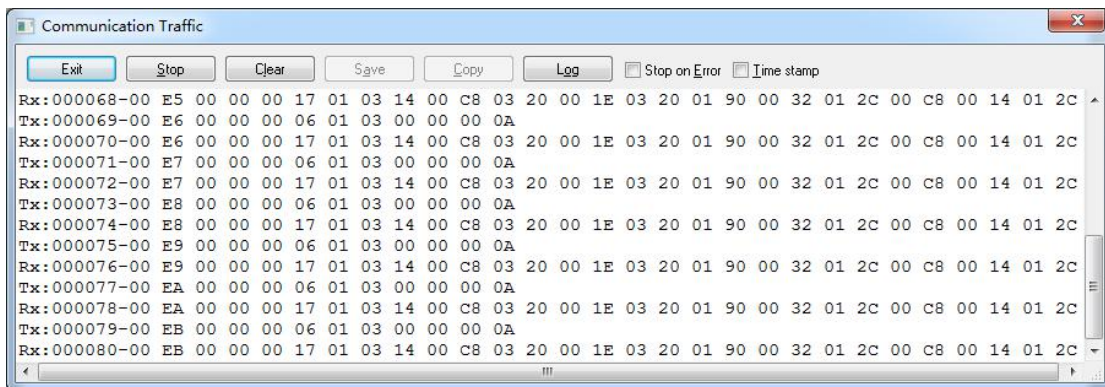
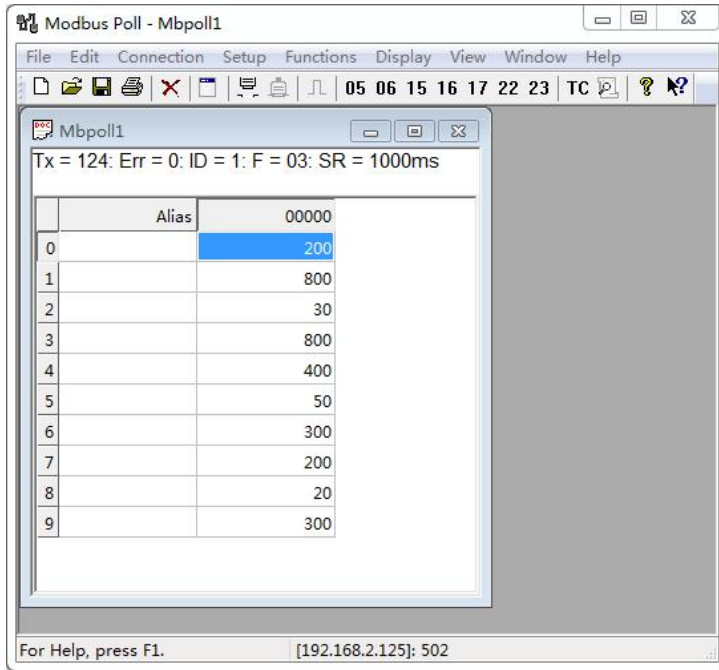
Server/Client Mode:

Server Listening Port:
Please enter an integer between 1~65535

4.7 When you set the parameters are finished. First click on the Apply button and then click on the Reboot button. Let the parameters take effect.

5. It is possible to test communication on the third party software.





Tested by a third-party tool ModbusPoll. All communications are true and normal.

Contact us

Shenzhen ATC Technology Co., Ltd
 Add. Room 803, Block D, Building 16, South Station Enterprise City,
 Port Road Nanhai District, Foshan, China, 528251
 Tel: (86 757) 8676 7929
 E-mail: tech@szatc.com
 www.szatc.com